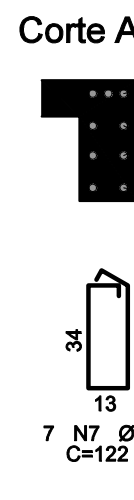
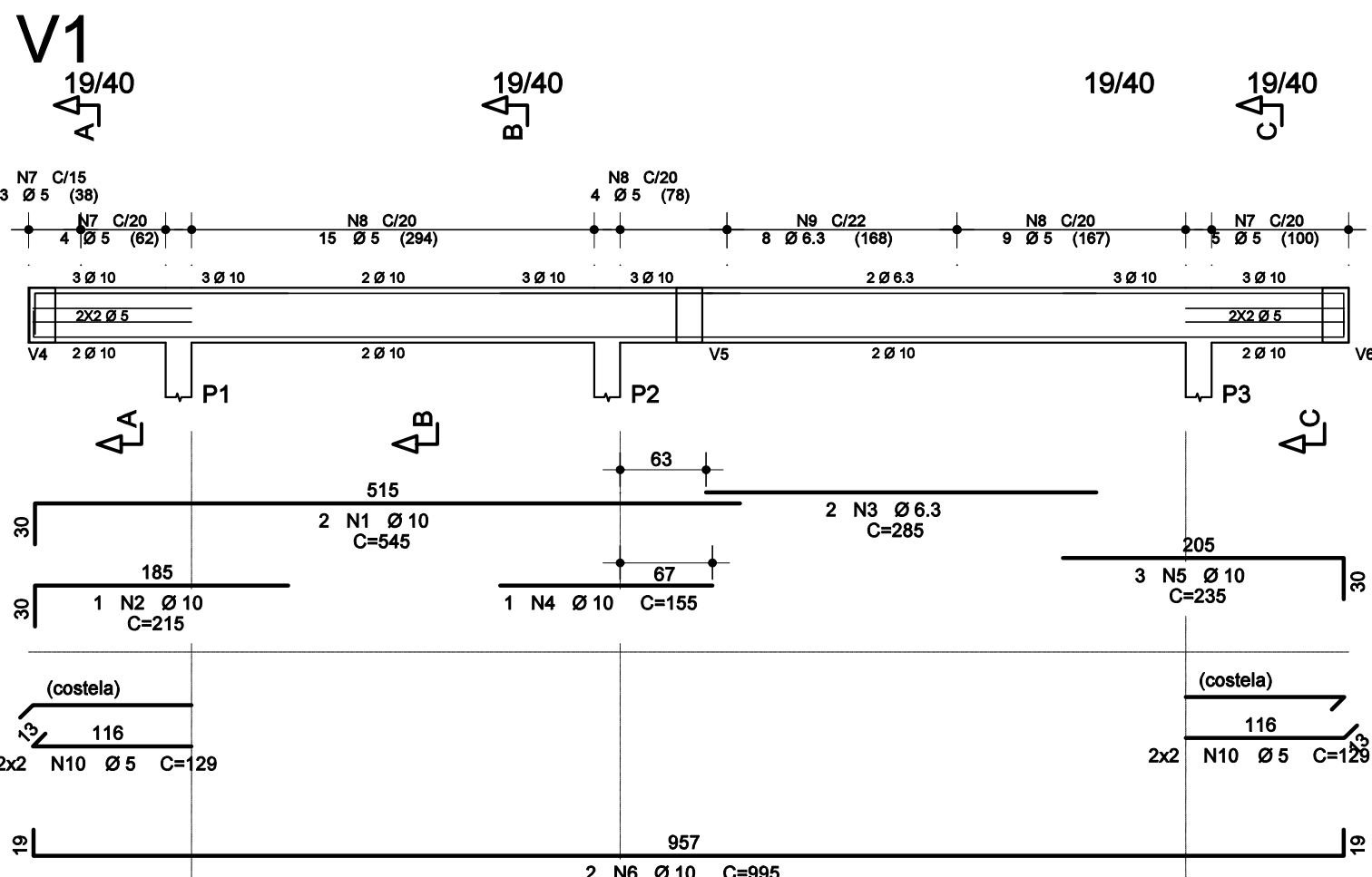
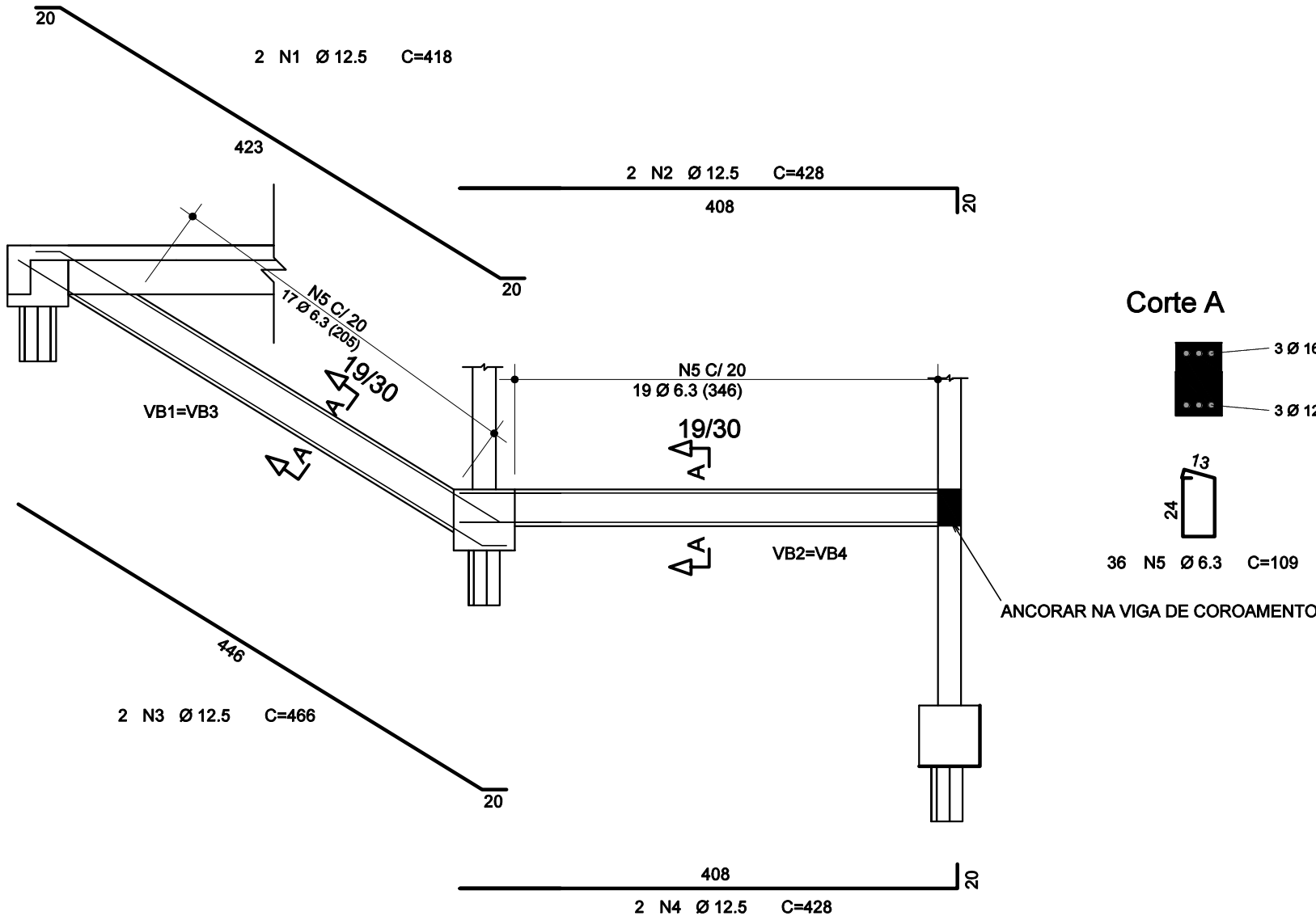
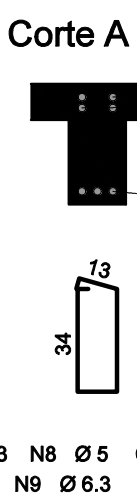
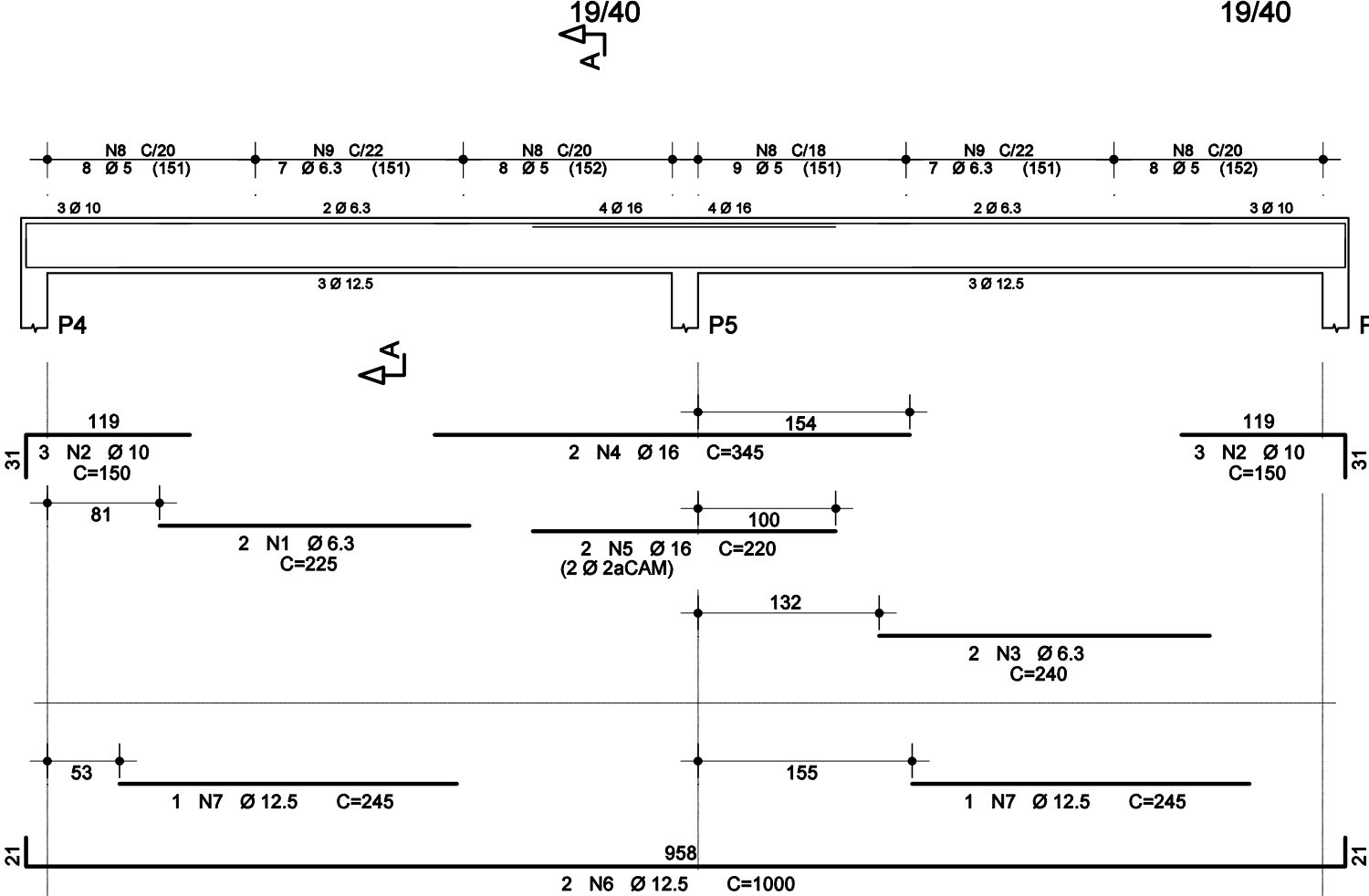


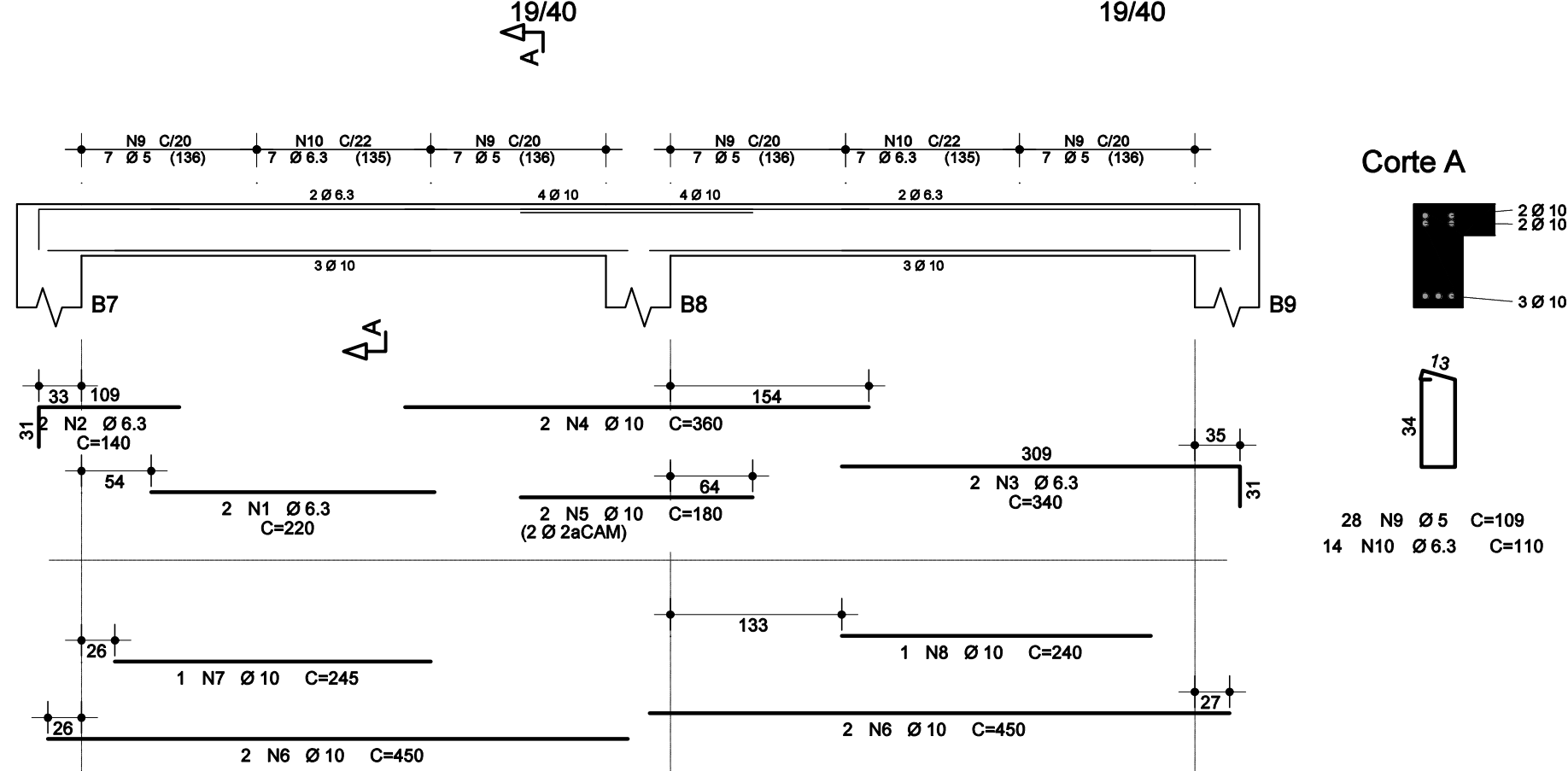
VB1=VB3 E VB2=VB4



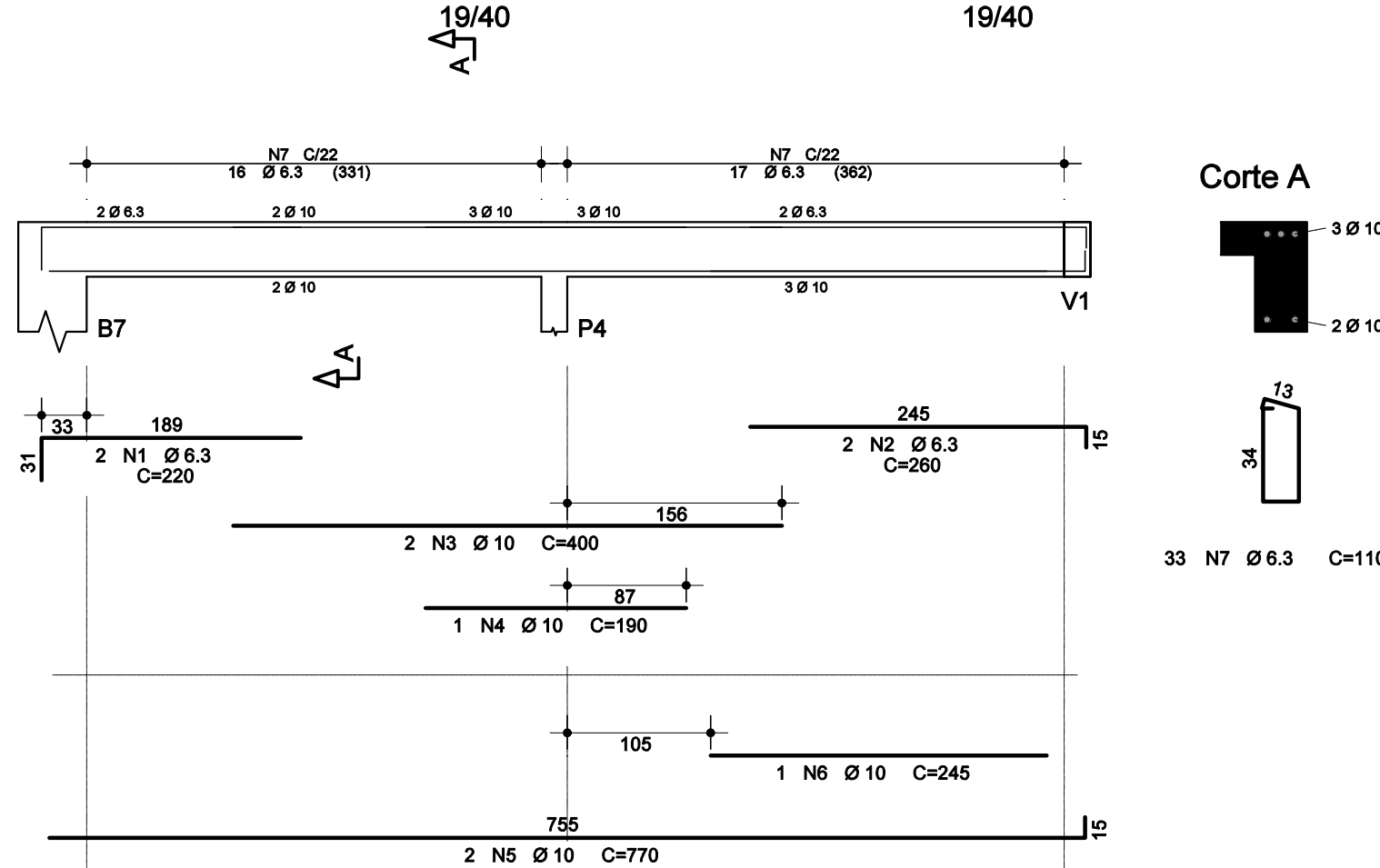
V2



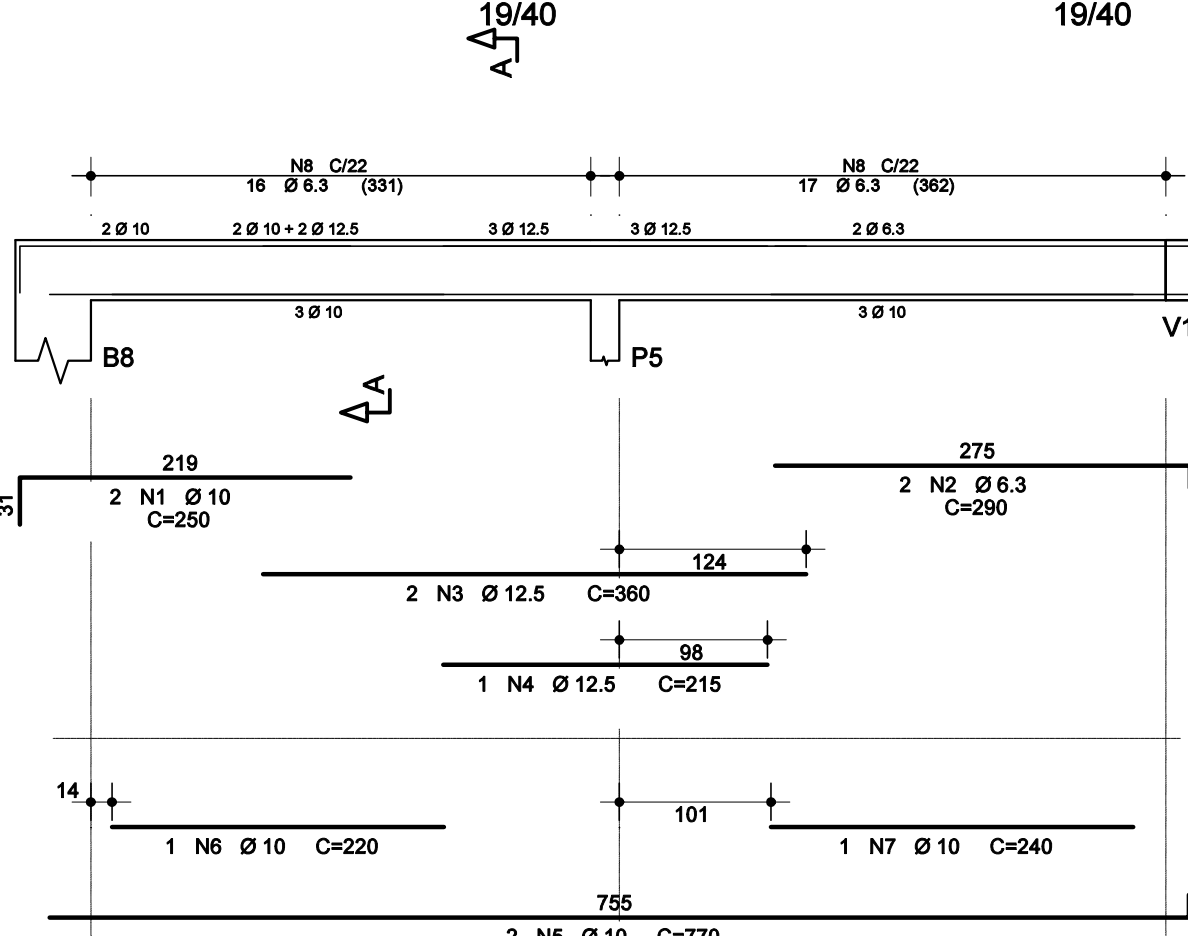
V3



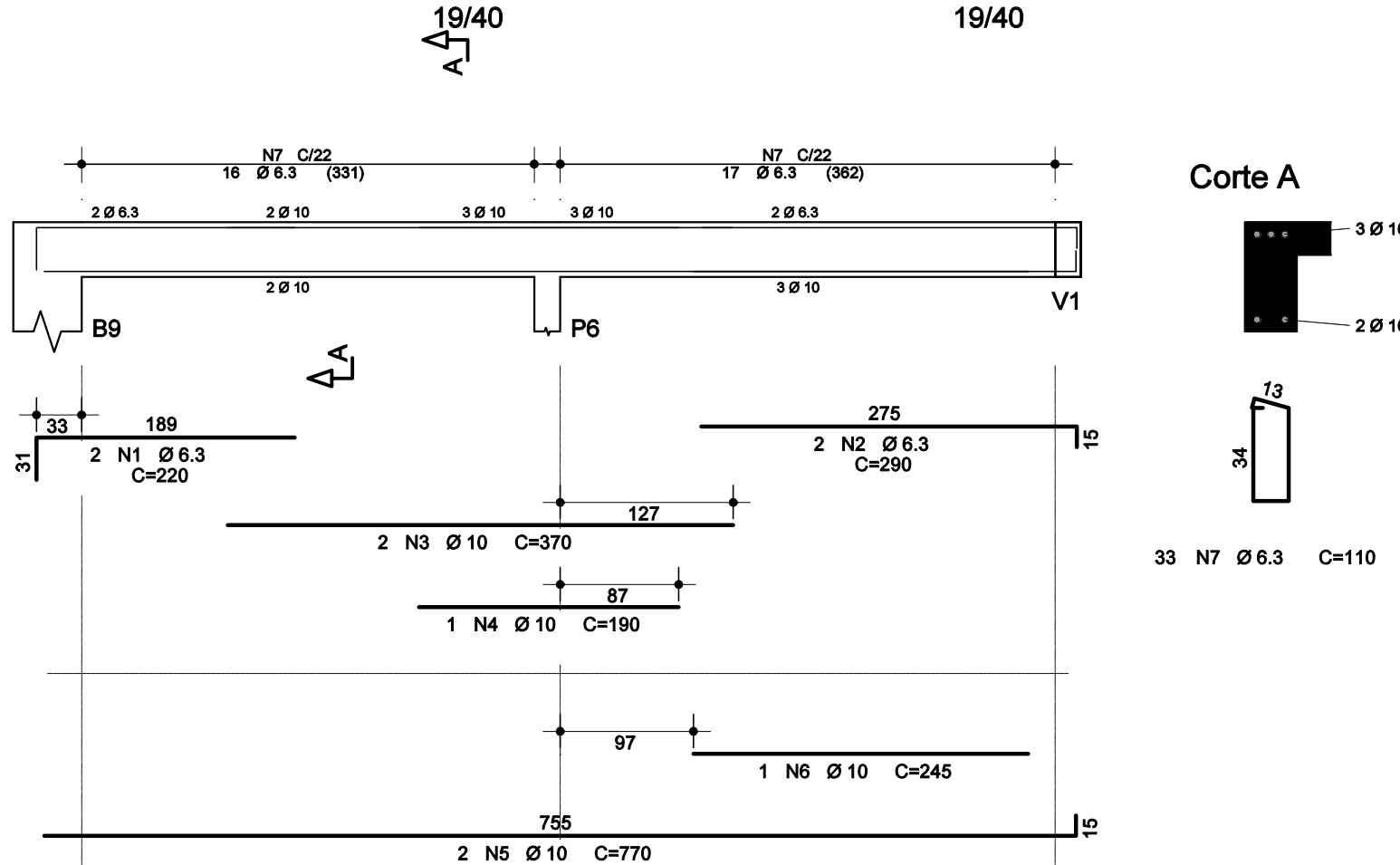
V4



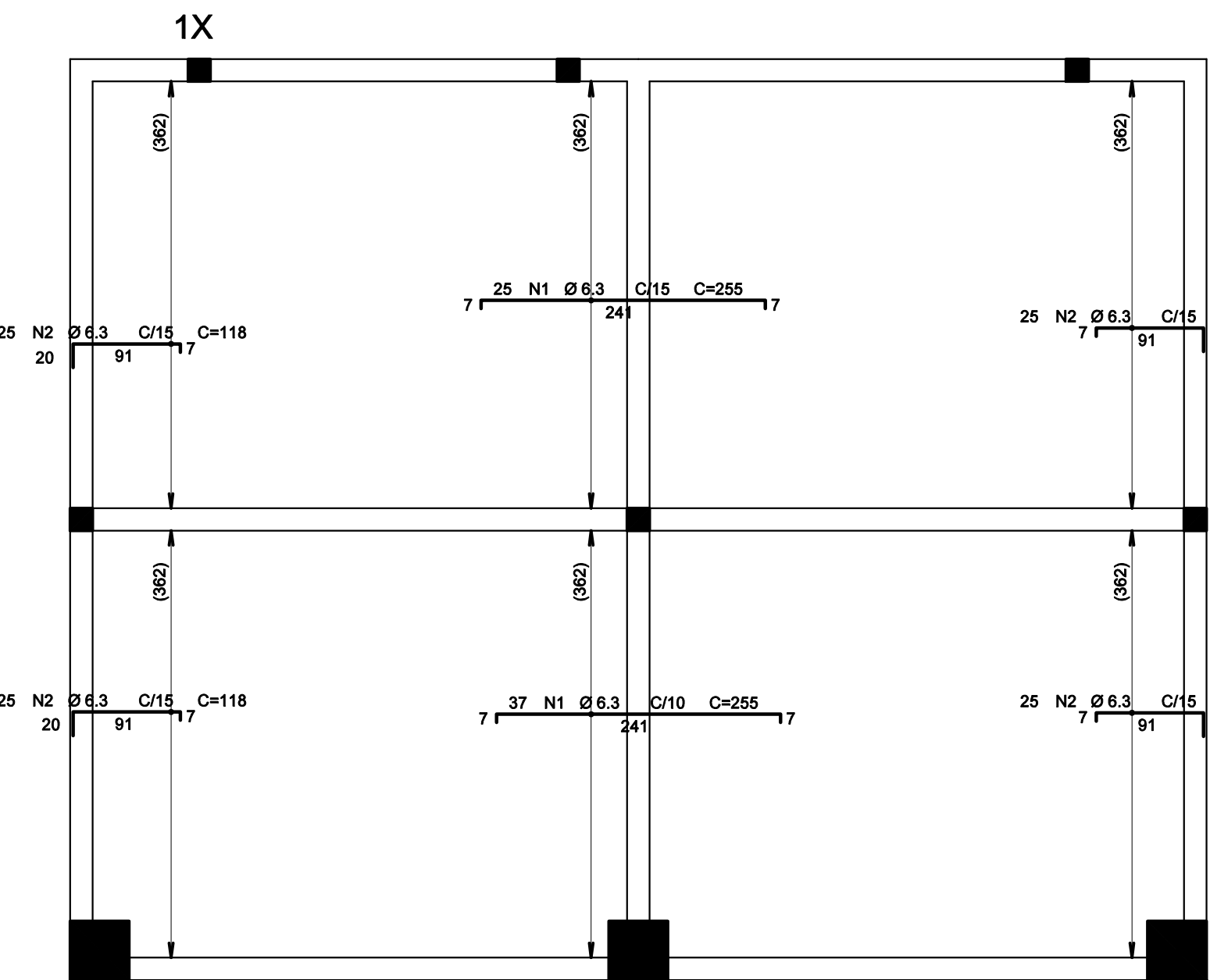
V5



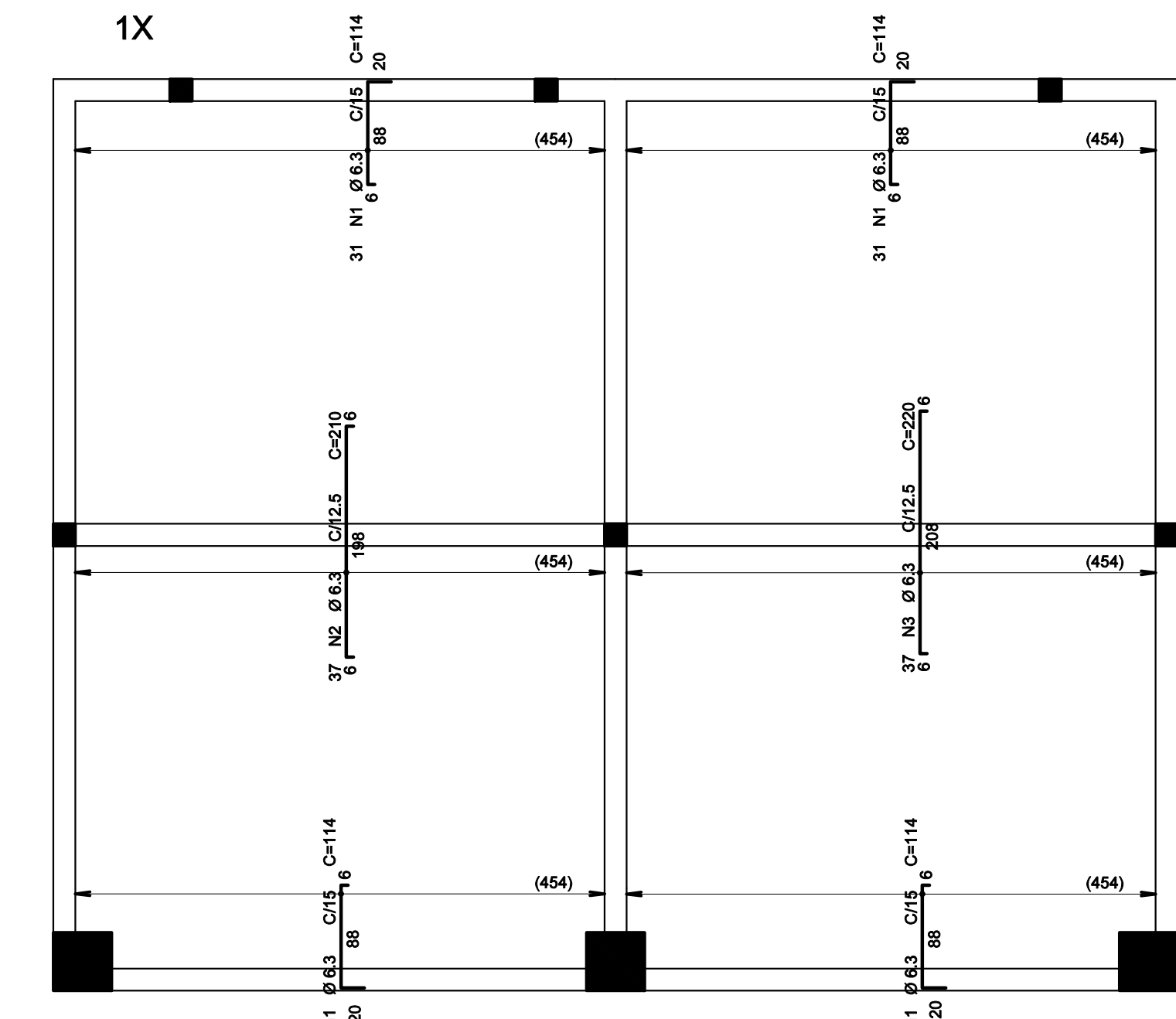
V6



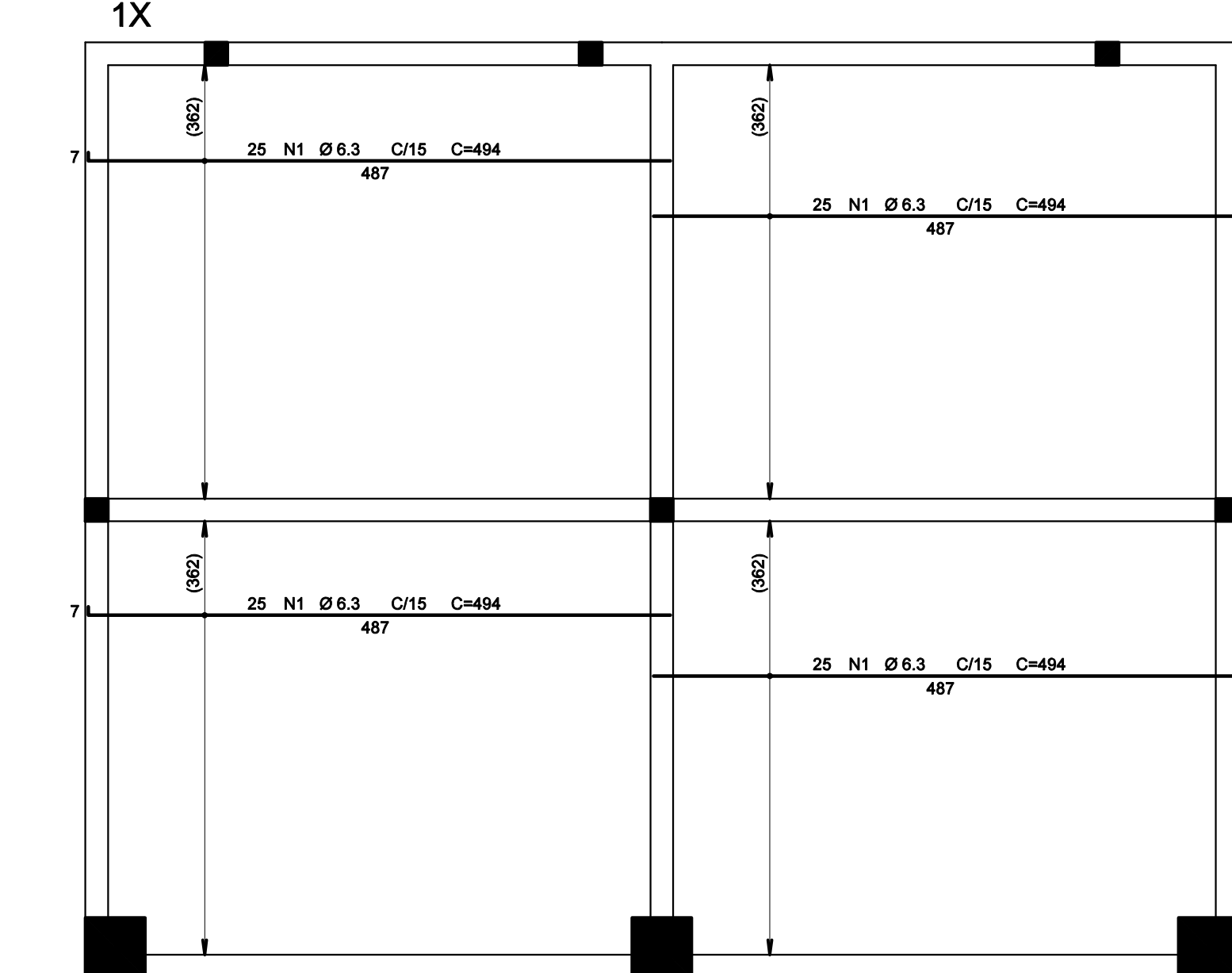
CAMAROTE - ARMADURA NEGATIVA HORIZONTAL



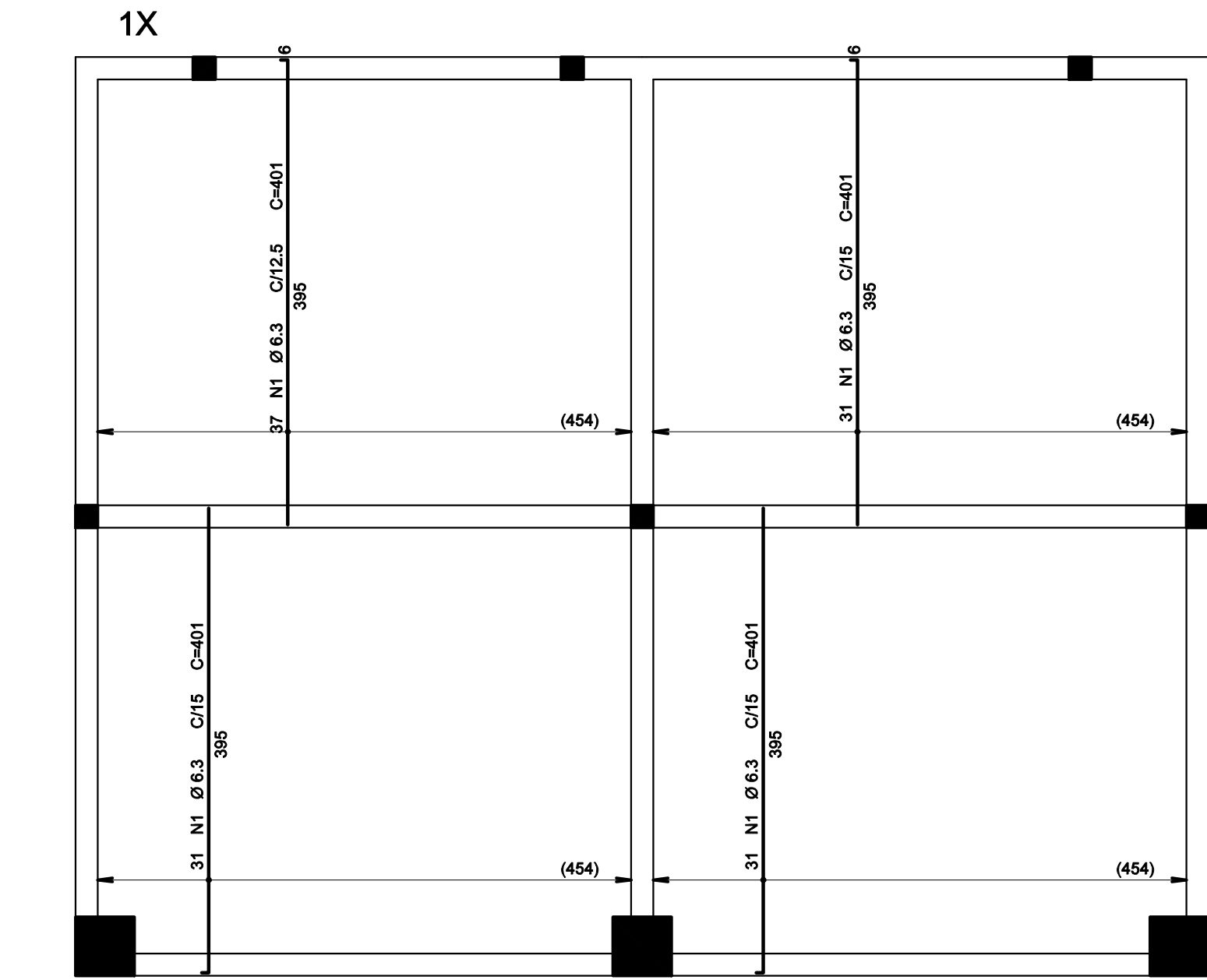
CAMAROTE - ARMADURA NEGATIVA VERTICAL



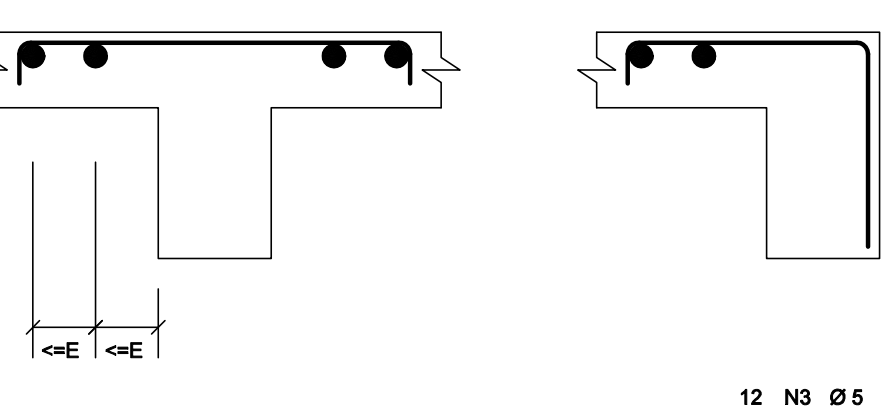
CAMAROTE - ARMADURA POSITIVA HORIZONTAL



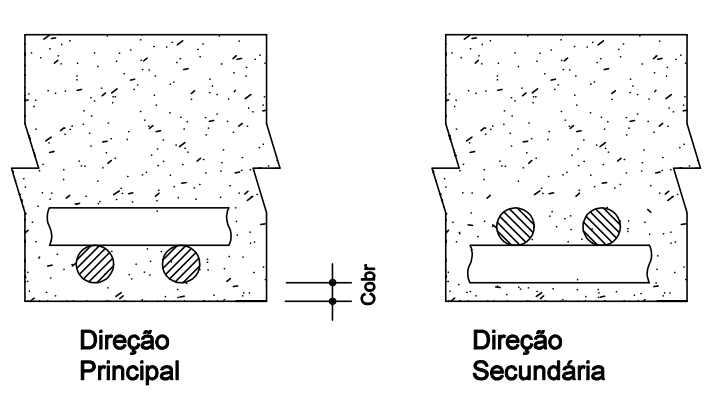
CAMAROTE - ARMADURA POSITIVA VERTICAL



DETALHE TÍPICO DE FERROS
DE DISTRIBUIÇÃO DE
ARMADURA NEGATIVA



Detalhe genérico do alojamento
de armaduras positivas



ESCALA
BLOCOS 1:25

PILARES 1:20

VIGAS:
-VISTA 1:50
-CORTE 1:25

LAJES 1:50

NOTAS

REV.	DATA	DESCRIÇÃO
00	15/03/2020	EMIÇÃO INICIAL
01	01/06/2020	ALTERAÇÃO DA FUNDAÇÃO APÓS SONDAGEM À PERCUSSÃO

SECRETARIA MUNICIPAL DE OBRAS DEPARTAMENTO DE ENGENHARIA E ARQUITETURA	
SECRETÁRIO DE OBRAS	BRUNO MÁRCIO MOREIRA ALMEIDA
RESPONSÁVEL TÉCNICO	JOSÉ CARLOS MONTEIRO MATA DA SILVA
PROJETISTA	HUGO KENJI INATOMI

PREFEITURA MUNICIPAL DE SANTA LUZIA ADM. DELEGADO CHRISTIANO XAVIER	
NÚMERO	082
DISCIPLINA	ESTRUTURAL
ETAPA	PROJETO BÁSICO
DATA	02/06/2020
FOLHA	05/05
REVISÃO	01

DIREITOS RESERVADOS (S) FEDERAL (S) DE 1974/1988.
A REPRODUÇÃO OU EXECUÇÃO TOTAL OU PARCIAL DESTES PROJETOS, SEM PRÉVIA AUTORIZAÇÃO, SUJEITA O RESPONSÁVEL ÀS MEDIDAS LEGISLATIVAS.